



LOUVRES



I. Description

- Stylish design and inspiring view
- Intensive ventilation and light structure
- Perfect combination of form and function
- Quick and easy assembly
- Wide range of top-finished options
- Perfectly combine with other elements

1.1. Application

- Industrial and commercial buildings and design
- Architecture, interior and exterior solutions
- Modular options

1.2. Function

- Combination of strength, functionality and aesthetic

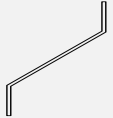
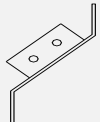



1.3. Correspondence

Products are in accordance with the following Directives and Standards.

General standarts		
1	EN 485 - 1, 2, 3, 4	Aluminium sheet
2	EN 10130/A1; EN10209	Cold rolled products
3	EN 10088-1 : 2005	Stainless steel
4	DIN 24041	Perforated products in sheets
5	ISO 129442	Corrosion protection of steel

II. Types

STANDART UNITS		
N _e	Types	View
1	WL 40/60 OW	
2	WL 40/60 IW	
		



CONTINUOUS UNITS		
No	Types	View
6	CL 40/60 OW	
7	CL 40/60 IW	
8	CL 40/60 F	
9	CL SP	
10	CL SWP	
ACOUSTIC UNITS		
11	WL SP	
12	WL SWP	

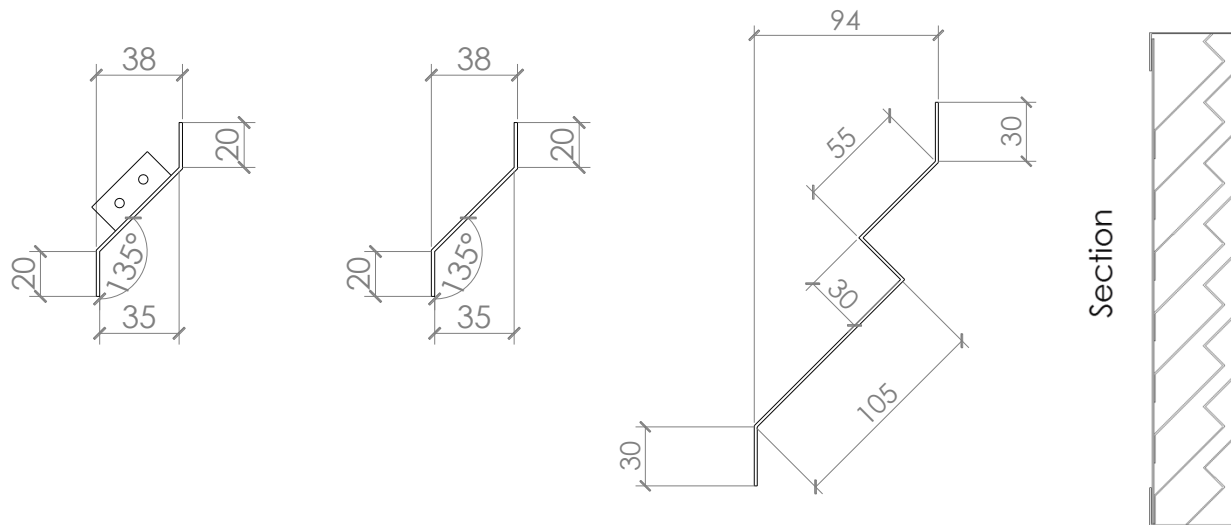
Note: 1. Standard and acoustic elements are produced for direct mounting.



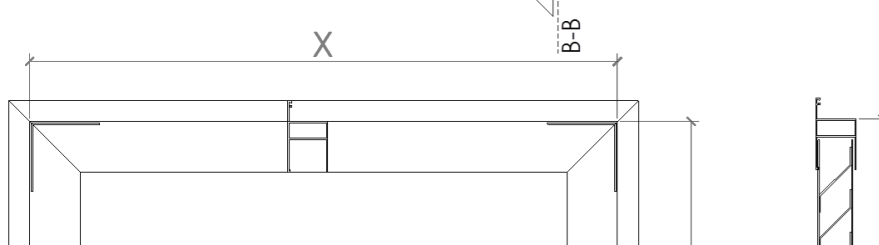
3.1. Standart units

- Different shapes of lamellas
- With 40% or 60 % aerodynamic surface
- Made by Aluminium, Mild Steel or Stainless Steel
- Lamellas in rectangular frame with size from 40x40cm to 300x300cm

Lamella form

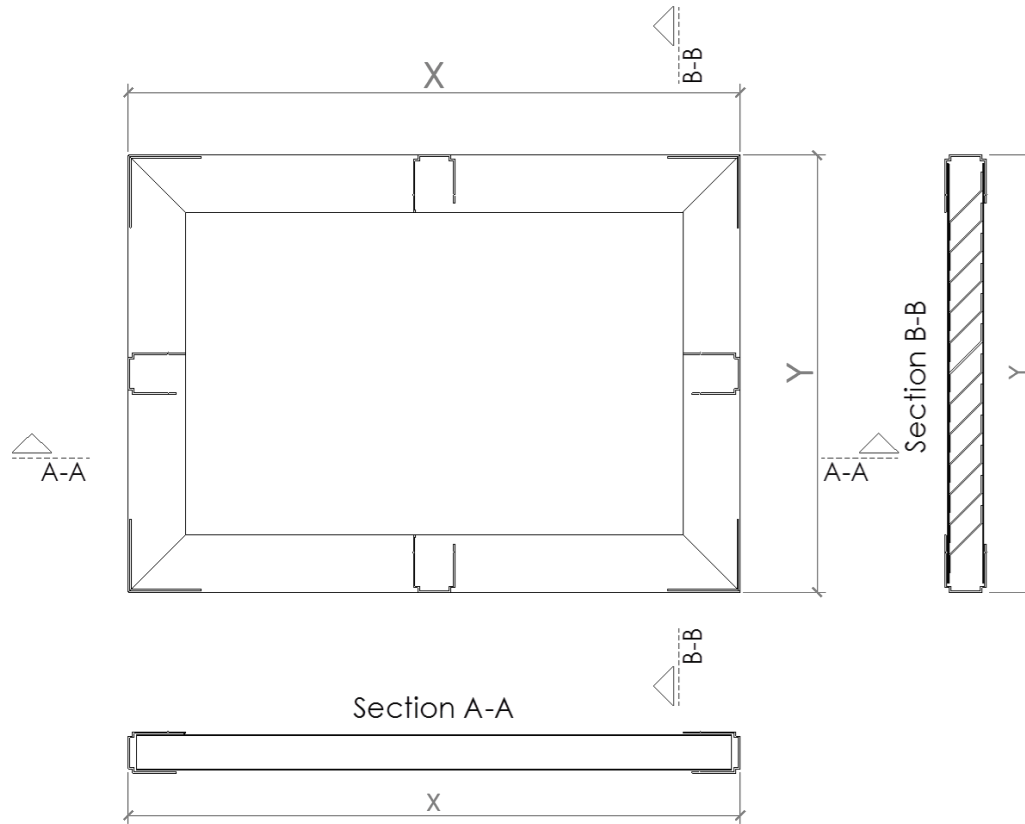


3.1.1. WL 40/60 OW - with aluminium profiles frame

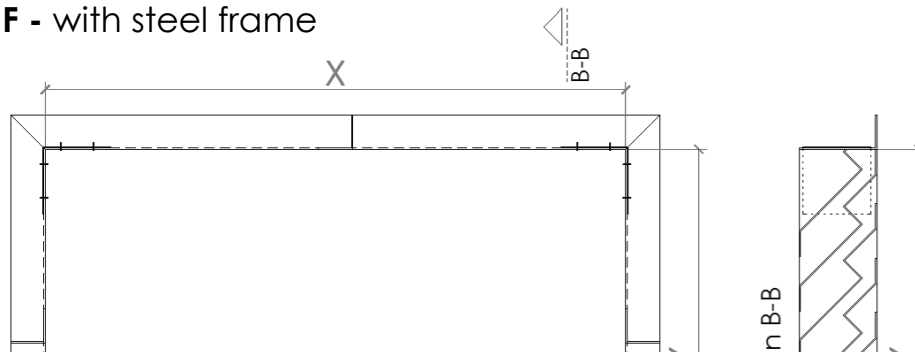




3.1.2. WL 40/60 IW - with aluminium profiles frame

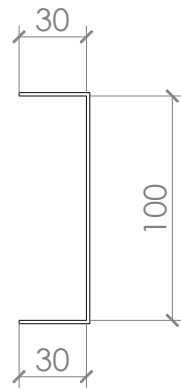


3.1.3. WL 40/60 F - with steel frame





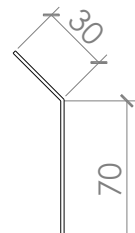
3.1.4.WL SP - sand protecting units



Section



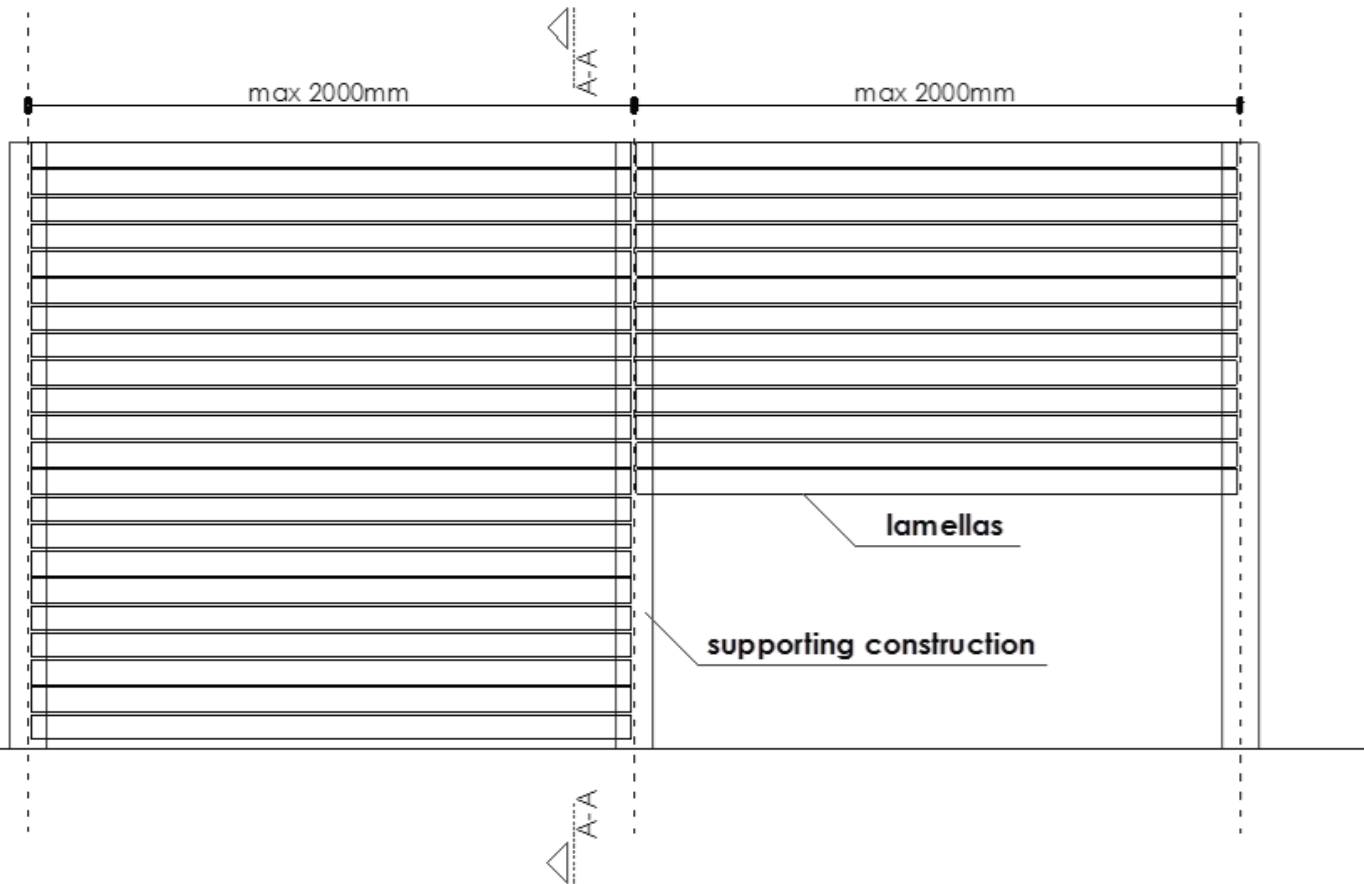
3.1.5.WL SWP - sand and water protecting units



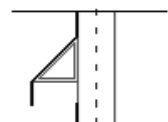


3.2. Continuous units - lamellas without frame-directly applied on the facade

CONTINUOUS LAMELLAS



Section A-A





3.3. Acoustic units - the louvre blades are fitted with sound-attenuating mineral wool inside

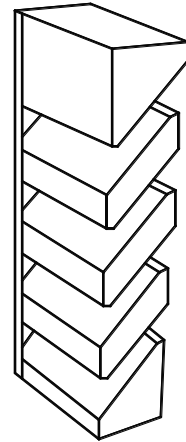


- **Single acoustic**





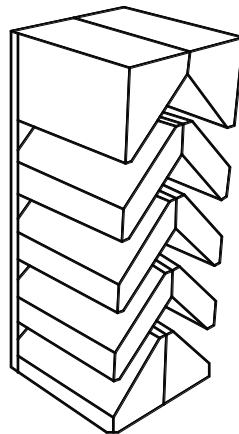
Vertical sections:



External face

- **Double acoustic**

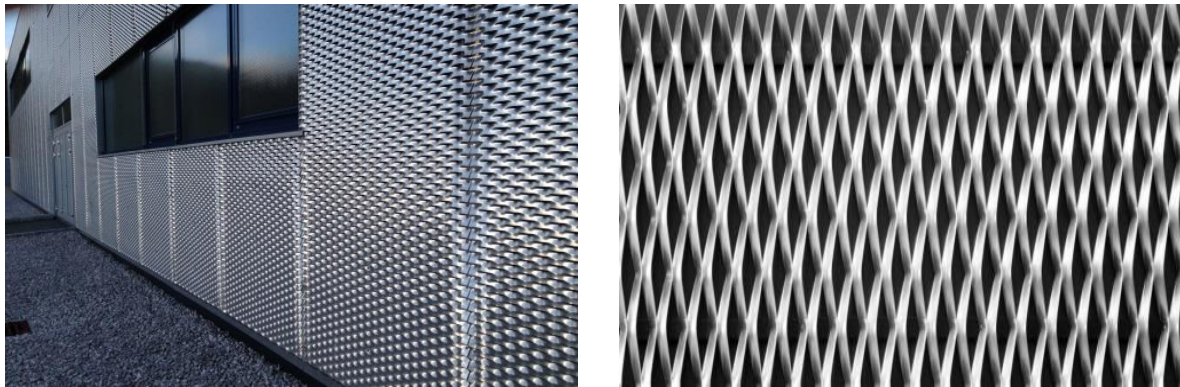
Vertical sections:



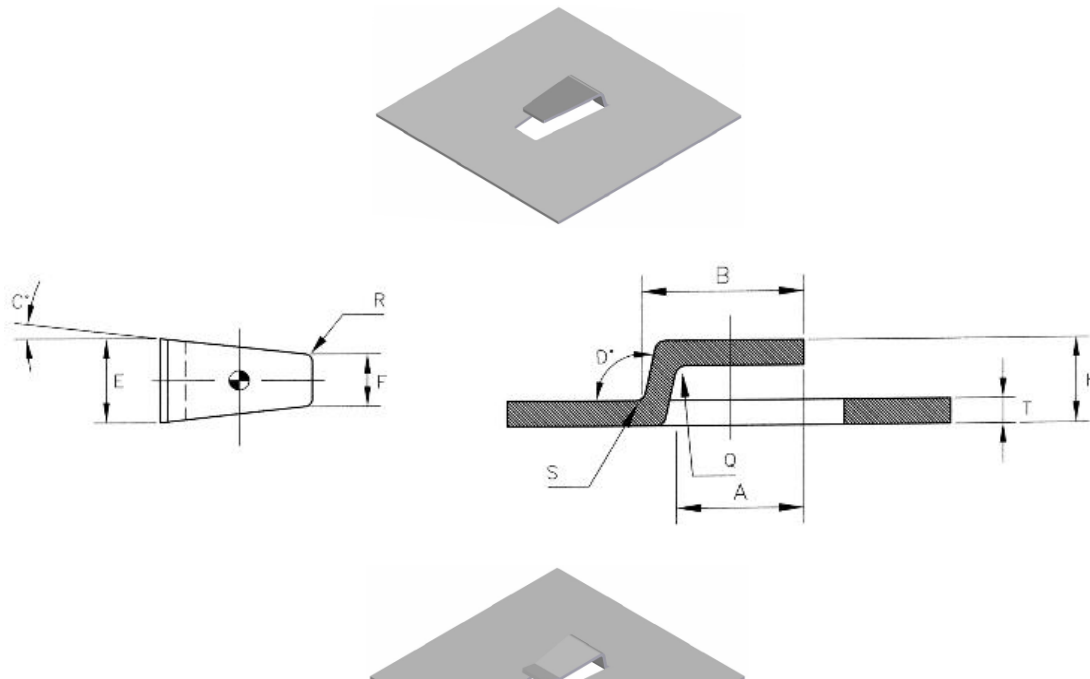
- **Mineral wool with different thickness**

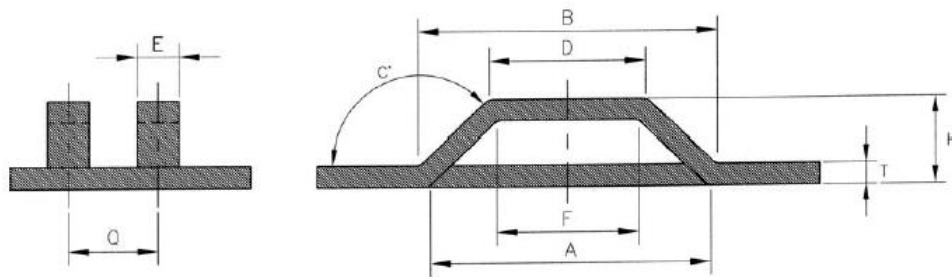
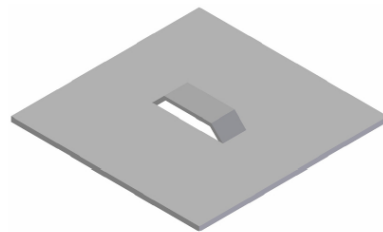
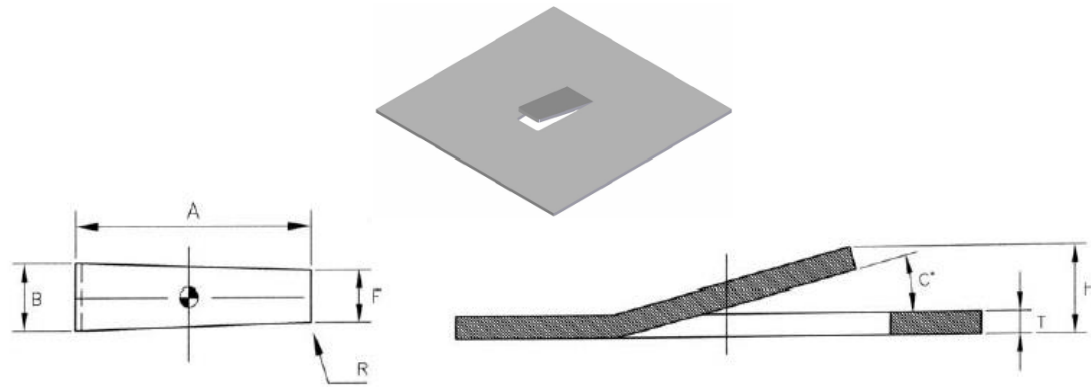


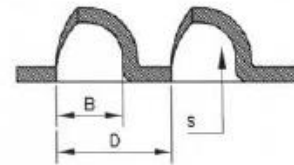
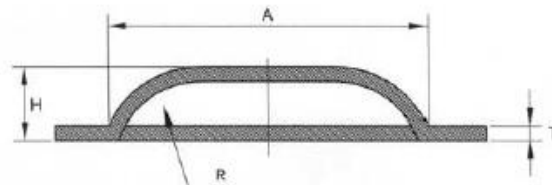
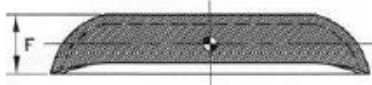
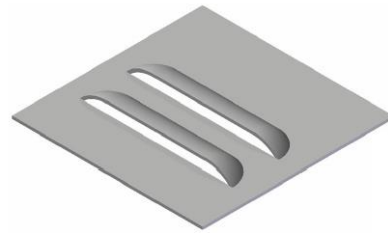
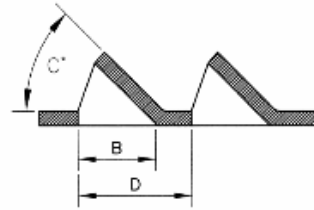
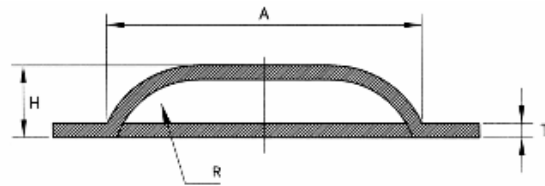
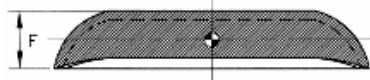
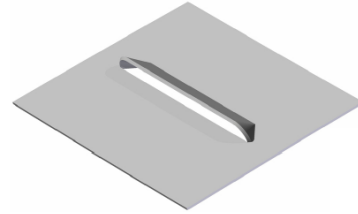
IV. Partial perforation



4.1 Perforating shapes



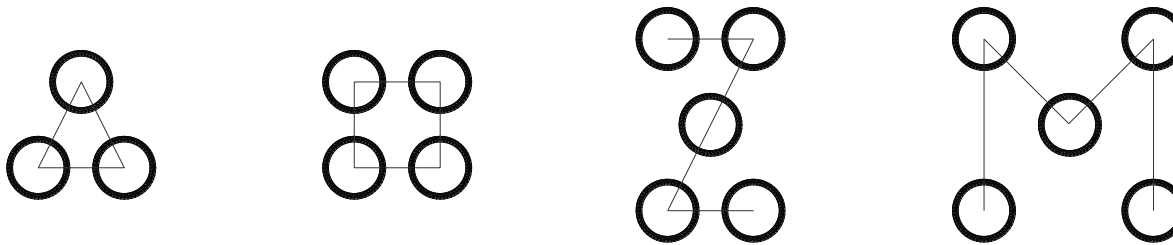






4.2 Pitch

Different pitch are possible



V. Additional options

5.1. Materials

- Aluminium and its alloys
- Stainless steel
- Cold rolled products

5.2. Protective options

- Top finish for exterior architectural use
- Top finish for interior architectural use
- Top finish for industrial use
- Top finish for industrial use

Note: For more information, please contact your consultant.