



# Glos DL V PC

## Polycarbonate facade system

### I. Description

- Facade lighting
- Daily ventilation
- Reconstruction technologies
- Natural smoke and heat ventilation systems

#### 1.1. Integrity in

- All types of facade and packages constructions with a variety of additional elements

#### 1.2. Function

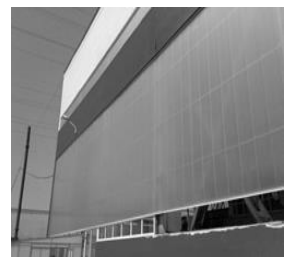
- Natural daylight
- Natural ventilation
- Smoke and heat ventilation

#### 1.3. Benefits

- A connection to the exterior
- Interior ambiance and occupant comfort
- Improved visual quality
- Overall general health and well-being
- Cost savings

#### 1.4. Correspondence

Glos DL V PC is in accordance with the following Directives and Standards.

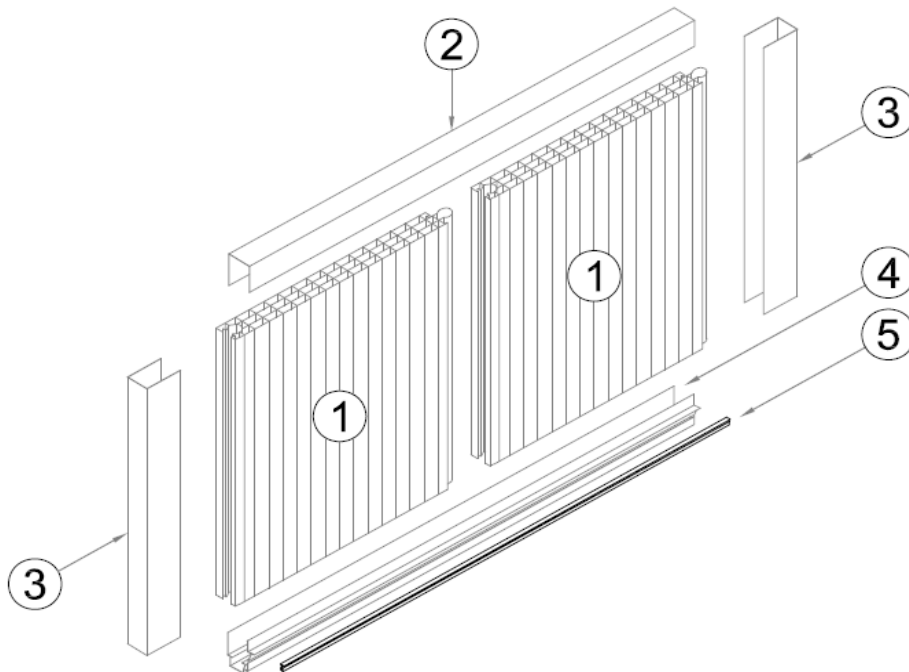




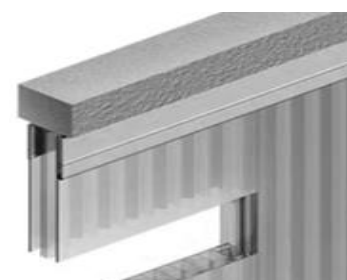
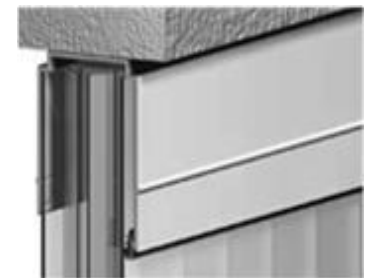
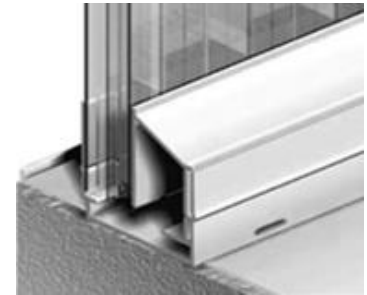
General standarts		
1	EN 13501	Bs1d0 / BS2d0
2	EN 15088	
3	ISO 9001: 2008	

## II. Components

Application 1



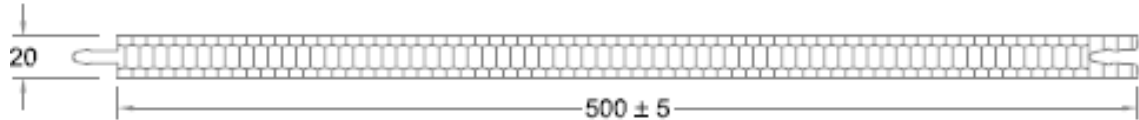
1. Multi – Wall Polycarbonate with UV protection
2. Top frame profile in aluminium
3. Side frame profile in aluminium
4. Bottom frame profile in aluminium
5. Gasket



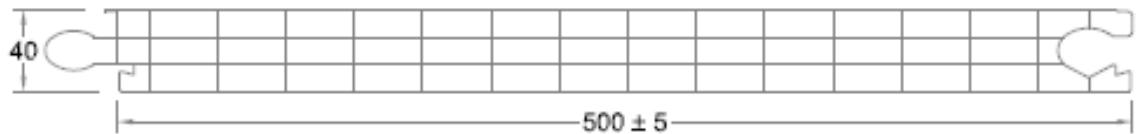


### 3.1. Panels range

- 20/500mm honeycomb



- 40/500mm 4 walls



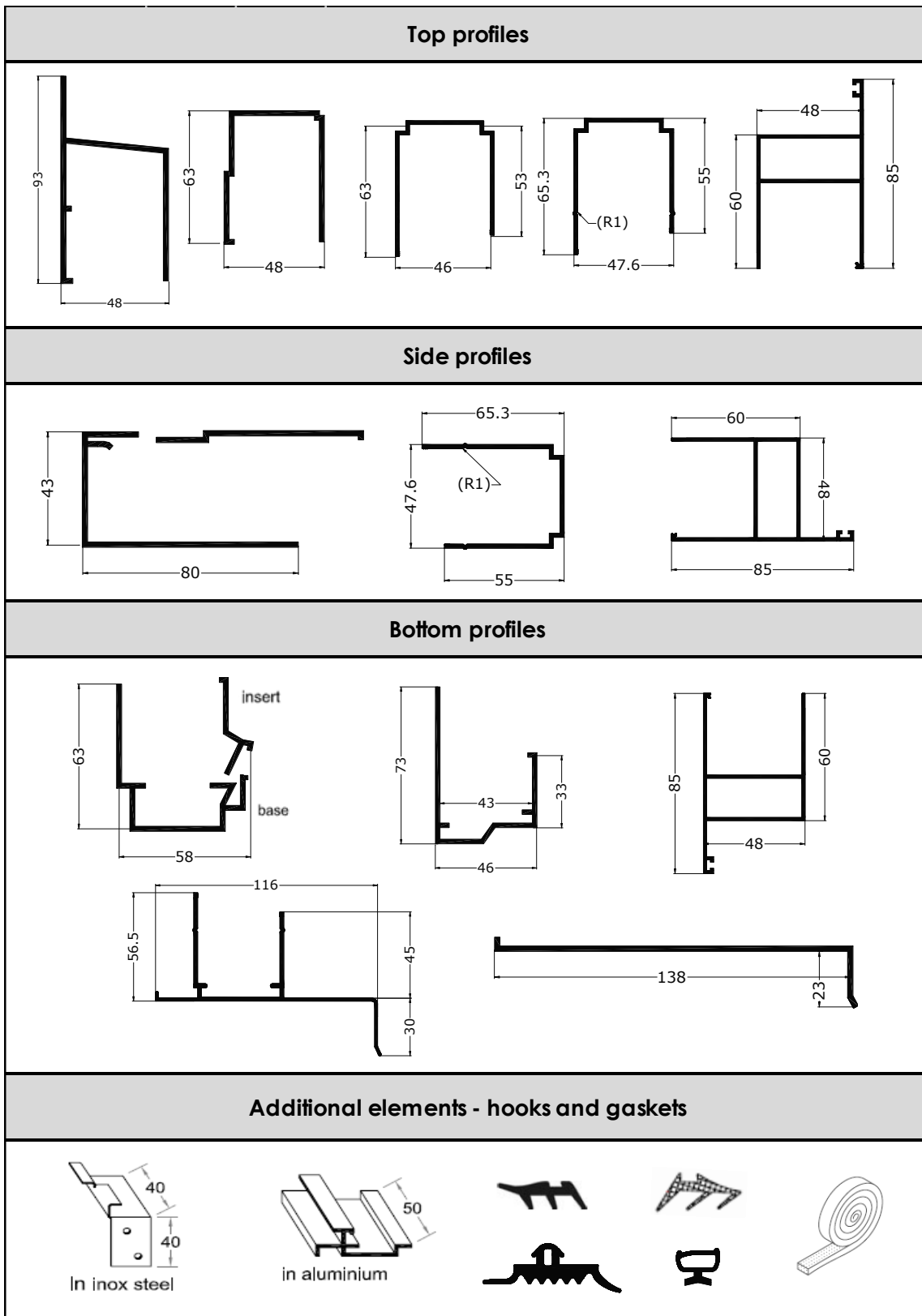
- 40/500mm 7 walls



<b>TECHNICAL DATA</b>	<b>20/500</b>	<b>40/500 4 walls</b>	<b>40/500 7 walls</b>		
Panel modular width				mm	
Pannel thickness	20	40	40	mm	
No. of walls	[4]	4	7		
Thermal transmisslon [U-value]	1,81	1,42	1,08	W/m <sup>2</sup> K	
Light transmission	Clear satlnized (*)	~ 54	~ 65	~ 54	%
	Opaline (*)	~ 35	~ 25	~ 20	%
<b>SPANS</b> q = 500 N/m <sup>2</sup> (wlnđ ≈ 100 km/h) q = 800 N/m <sup>2</sup> (wlnđ ≈ 130 km/h)	<b>D max</b>	<b>D max</b>	<b>D max</b>		
	1.400	2.300	2.350	mm	
	1.300	2.050	2.100	mm	
Thermal expansion	0,065			mm/m K	
Temperature range	-40 / +120			°C	



### 3.2. Elements



Note: The gasket is optional.

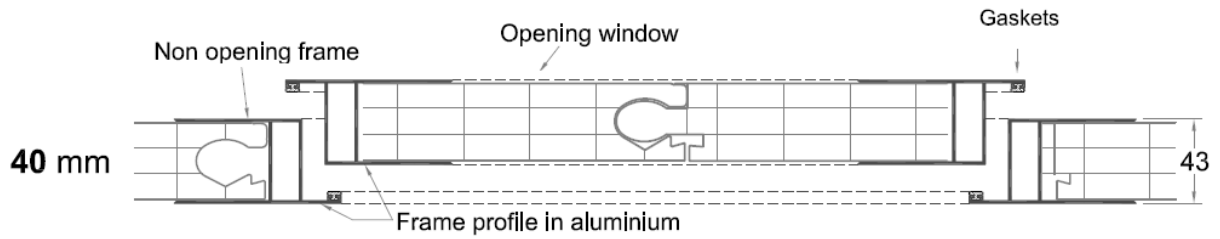


### 3.3. Type systems profiles

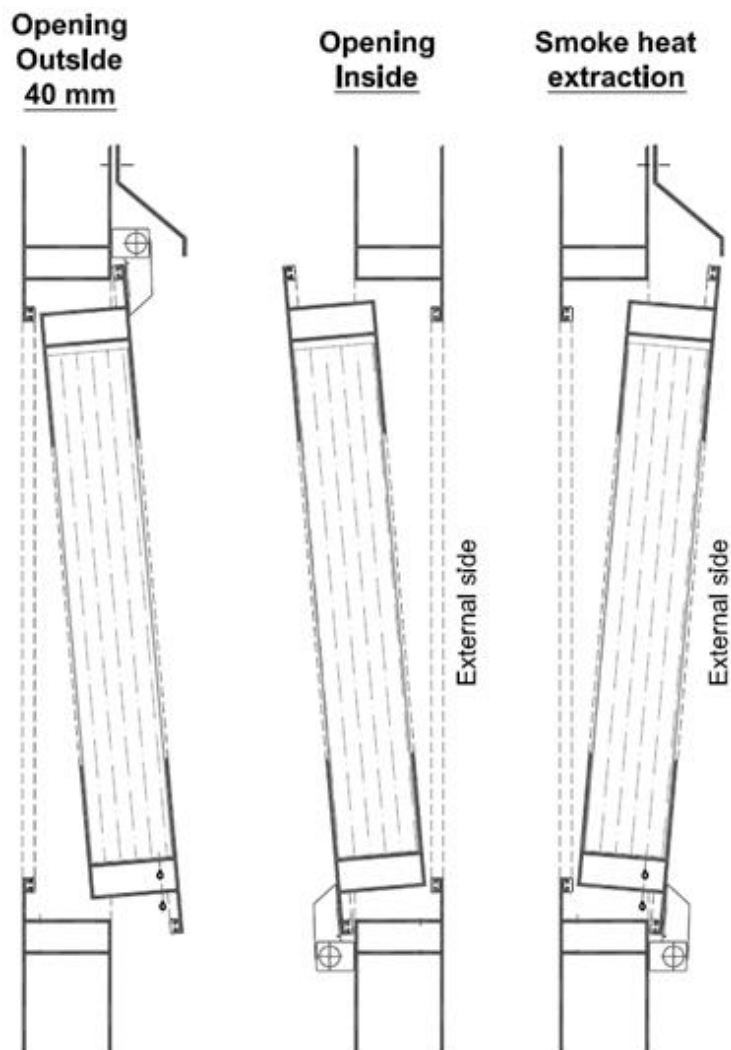
Glos DL V PC can be produced by different systems profiles.

- **System 1**

Horizontal section



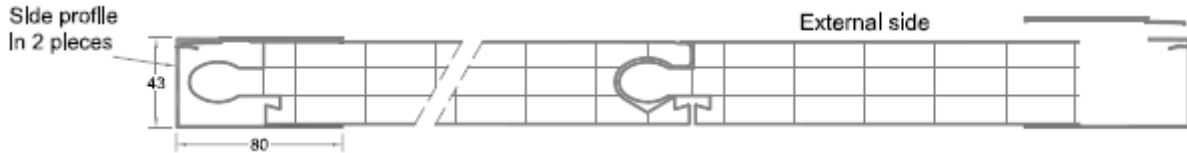
Vertical sections





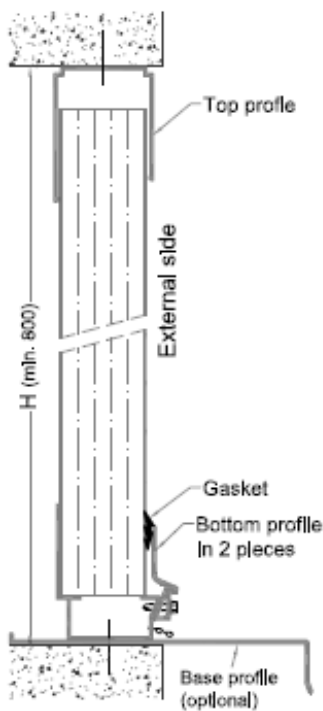
- **System 2 – without thermal break**

### Horizontal section

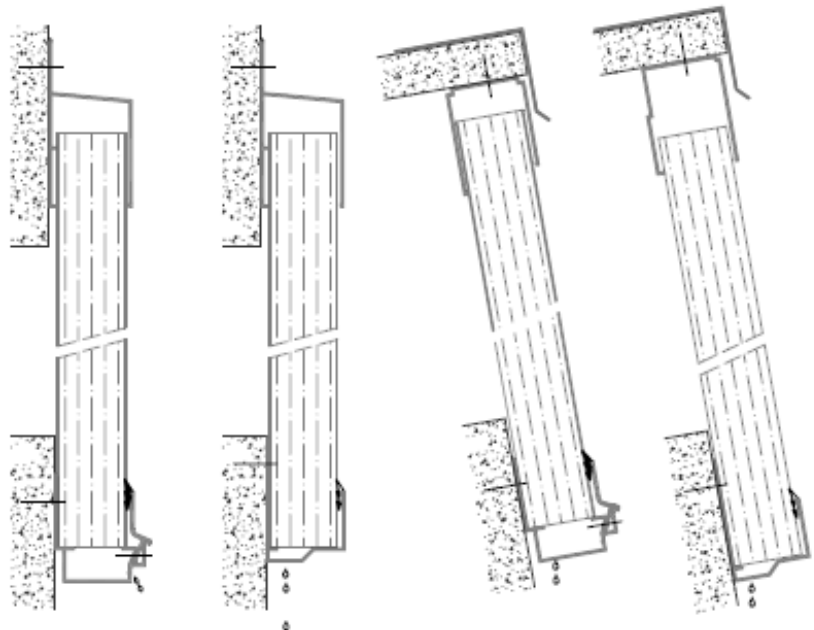


### Vertical sections

#### Wall application



#### External applications - vertical and inclined



### 3.3. Special solutions

- Polycarbonate multiwall panels filed with aerogel.
- Aerogel -Translucent Granules that allow light to pass while serving as a highly effective thermal and acoustical insulation

### 3.4. Function upgrade elements

- With flaps
- With lamella fan



- With electric fan
- With louver
- With duct
- Antibird set
- Mosquito set
- Solar protection

### III. Technical parameters for Glos DL V PC

- RWA function

Resistance to heat classification	B - s1, d0; B - S2, d0
-----------------------------------	------------------------

- Coefficient of thermal transmission of entire unit

<b>thickness</b>	<b>UV protected multi-wall polycarbonate panels</b>	<b>U value [W/m<sup>2</sup>.K]</b>
20 mm modular width 500mm	4 walls, honey combs	1,81
40 mm modular width 500mm	4 walls	1,42
40 mm modular width 500mm	7 walls	1,08

**Note: For more information, please contact your consultant.**