



## INSTALLATION INSTRUCTIONS FOR FACADE FLAPS



[www.sament-group.com](http://www.sament-group.com)

## 1. Description

GLOS E45 is a system of solutions for natural smoke and heat extraction in the event of fire, based on an aluminium profile system. This NSHEV is designed for installation in all types of facade packages.

## 2. Opening types

The system has several solution options depending on the type of opening:

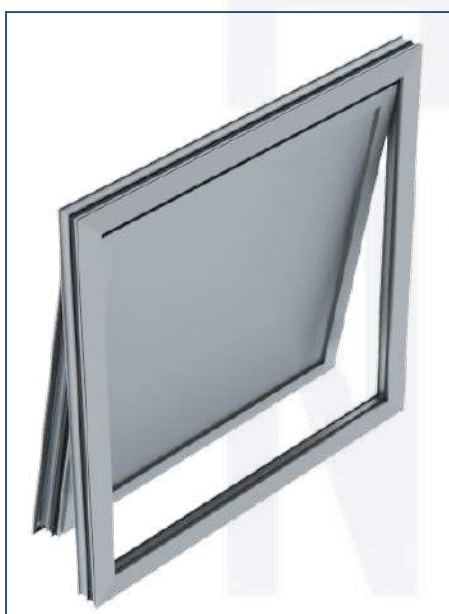
Bottom opening inwards



Top opening inwards



Bottom opening outwards



Top opening outwards



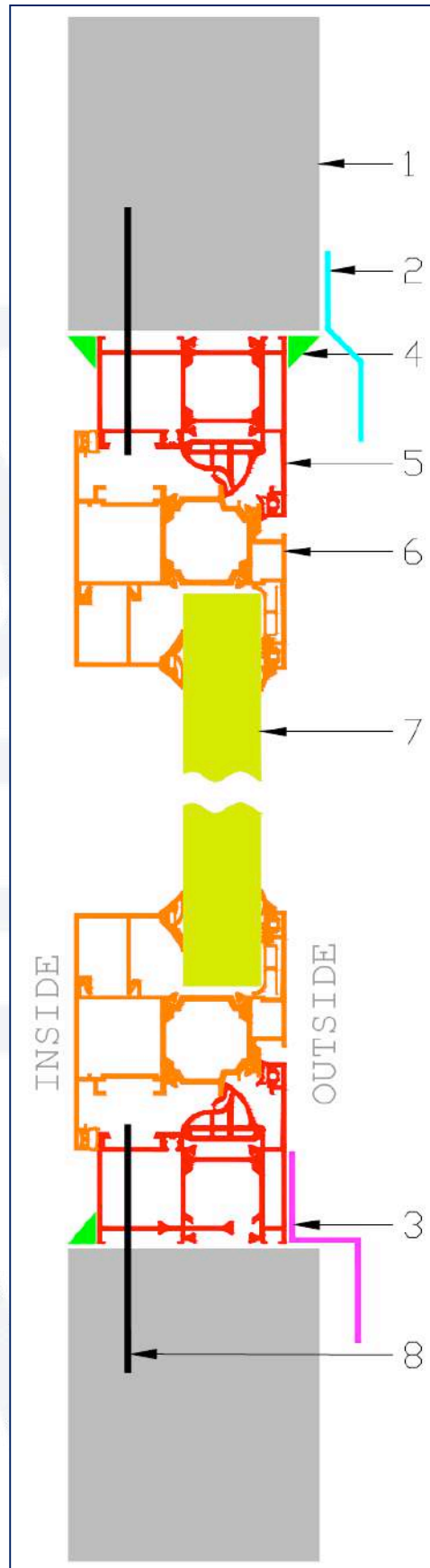
### 3. Opening types

- ✎ Electrically- with a 24 V chain motor
- ✎ Pneumatically- with a pneumatic cylinder

### 4. Installation sequence

#### 4.1. Reinforced concrete/brick facade (Fig. 1)

- ✎ Measurement of installation opening in the facade of the building
- ✎ Disassembly of the drive device / releasing the electric motor chain, or the piston of the pneumatic cylinder /
- ✎ Fixing of the facade flap in the installation opening
  - Levelling the facade flap into the installation opening using levelling wedges
  - Fixing the flap through a corresponding type of fixing element in accordance with the facade type (Tbl. 1)
  - Setting of the installation PU foam
  - Removal of the levelling wedges after the setting of the installation foam
- ✎ Mounting the drive / reattaching the electric motor chain, or the piston of the pneumatic cylinder to the openable part of the unit /



Фиг.1. Fixing the facade flap to a reinforced concrete/brick facade



**Description:**

1. Reinforced concrete/brick facade
2. Upper waterproof flashing
3. Lower waterproof flashing
4. Sealing
5. Base
6. Openable part
7. Package /PC/sandwich panel/ glass package
8. Fixing element

**4.1.1. Fixing elements:**

Table 1.

<i>Installation in reinforced concrete/brick facade</i>		
<i>Fixing element</i>	<i>Reinforced concrete</i>	<i>Brick</i>
<b>I Fixing facade flap to reinforced concrete/brick facade</b>		
Segment anchor M10 x 100 mm or Self-drilling screw 7,5 x 72 mm	1 pc. per 0,2 m distance Note: at least 5 pcs. on each side	
Anchor for brick M8 x 100 mm, Chemical anchor M8 x 100 mm, or Self-drilling screw for concrete/brick 7,5 x 72 mm		1 pc. per 0,2 m distance Note: at least 5 pcs. on each side

**4.2. Facade of sandwich panels (Fig.2 and Fig.3)**

- Measurement of the installation opening in the facade of the building
- Disassembly of the drive device / releasing the electric motor chain, or the piston of the pneumatic cylinder /
- Fixing of the facade flap in the installation opening
  - Levelling the facade flap into the installation opening using levelling wedges
  - Fixing the flap through a corresponding type of fixing element in accordance with the facade type (Tbl.1)
  - Setting of the installation PU foam
  - Removal of levelling wedges after the setting of the installation foam
- Mounting the drive / reattaching the electric motor chain, or the piston of the pneumatic cylinder to the openable part of the unit /



Fig.2. Fixing of facade flap in sandwich panel facade , Variant 1.

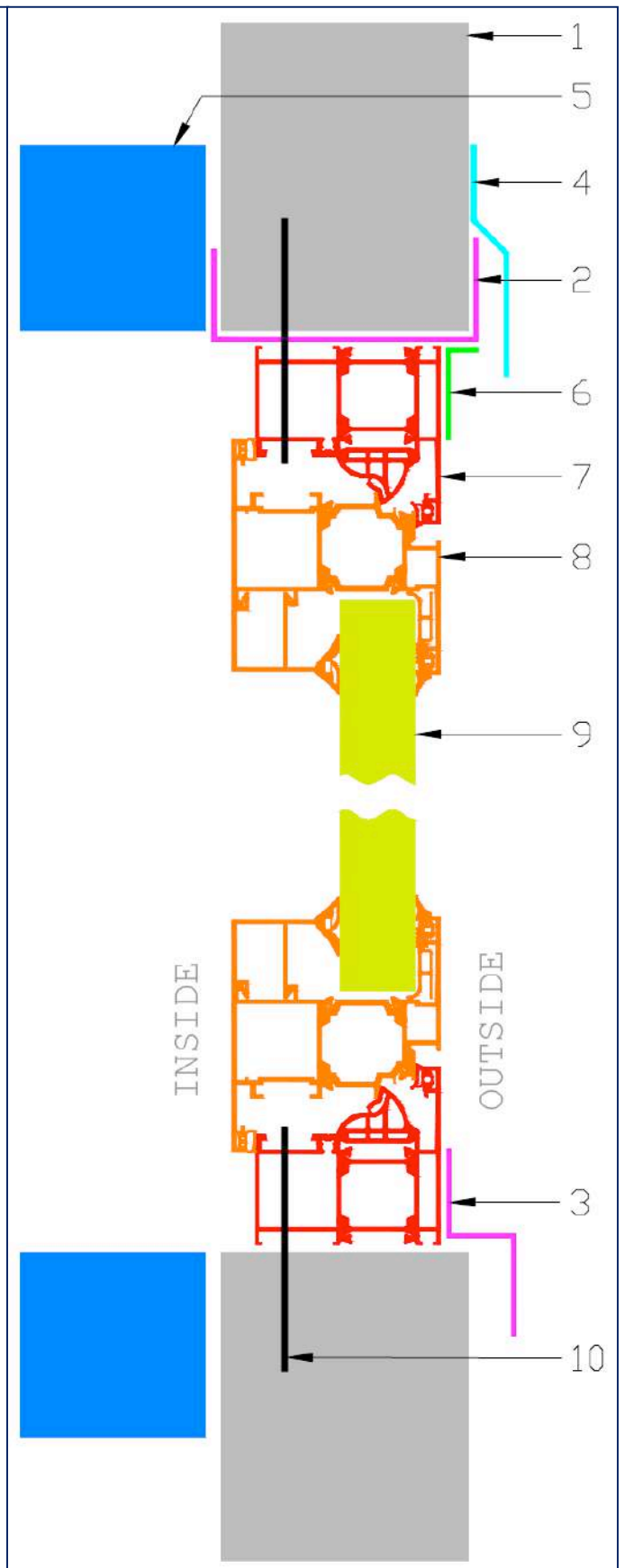


Fig.3. Fixing of facade flap in sandwich panel facade , Variant 2.





**Description:**

1. Sandwich panel facade
2. U type flashing
3. Lower waterproof flashing
4. Upper waterproof flashing
5. Supporting construction
6. L type flashing
7. Base
8. Openable part
9. Package /PC/sandwich panel/ glass package
10. Fixing element

**4.2.1. Fixing elements:**

Table 2.

<i>Installation in sandwich panel facade</i>	
<i>Fixing element</i>	
<b>I Fixing facade flap in sandwich panel facade</b>	
Self- drilling screw 6,3 x 70 mm	1 pc. per 0,2 m distance Note: at least 5 pcs. on each side

**5. Recommendations for safe installation**

To safely execute the assembly process, we recommend:

- ✎ Take all necessary precautions to safely secure loads when lifting on to the roof / wall. Use appropriate and secure equipment and certified fasteners with a reserved holding capacity of at least 50%
- ✎ The necessary safety equipment should be provided for all roof mounting activities
- ✎ All power tools used must be in a good working order and used in accordance with the manufacturer’s instructions
- ✎ It is obligatory to comply with all National Health and Safety in the Workplace legislation

